

MAXI LED

Une division de
 Next EnR
 Tel: 04 75 601 113
 www.maxi-led.fr

Pavé lumineux à LED et super capacité: Élégance, fiabilité et écologie

Ces pavés lumineux résolvent à la fois les problématiques d'alimentation et de câblage, mais aussi les problématiques de maintenance, puisque celle-ci est nulle. L'énergie électrique produite par le panneau photovoltaïque incorporé au pavé est stockée dans des super capacités. Il n'y a donc pas de pile ou d'accumulateur à changer régulièrement. Cette absence d'accumulateur en fait un produit propre: pas de métaux lourds à l'intérieur de ce pavé lumineux.

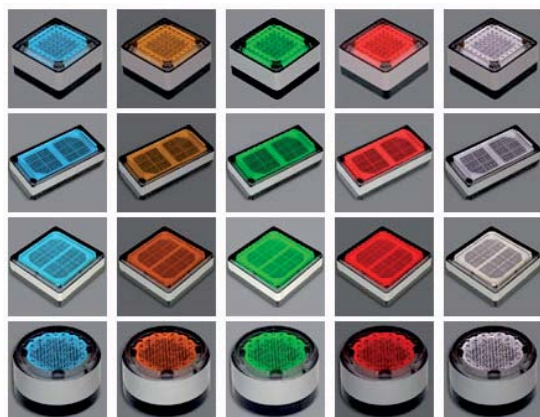
Utilisé autant pour leur esthétique que pour leurs fonctions, ces pavés lumineux à LED permettent de créer une ambiance lumineuse et visuelle tout en apportant de réels éléments de sécurité et de signalisation dans tous les lieux publics ou privés.

Les applications sont aussi nombreuses que votre imagination le permet avec pour seule restriction un ensoleillement direct en cours de journée.

Applications

■ Chemin privatif	■ Quai de gare	■ Allée de promenade
■ Devanture de commerçant	■ Parking de grande surface ou d'entreprise	■ Bord de rivière ou de fleuve
■ Cour d'école	■ Marche d'escalier	■ Rue piétonne
■ Façade de bâtiment ou d'entreprise	■ Amphithéâtre	■ Place publique
■ Patio	■ Porche d'entrée	■ Piscine

Existe en 6 couleurs



Operations

Solar panel type	Mono-crystalline
Illumination technology	Ultra-bright LEDs
Energy storage	Ultra-capacitors
Charging time	2 (sunny day) to 8 (cloudy day) Hours
Operation at full charge	Up to 16 hours
Colors	Red, Green, Blue, Orange, Amber, White
Operating temperature	60 °C to -25 °C
Automatic On/Off level	150 lux - 350 lux

Lighting Properties

Color	Luminance (Nit)		Illuminance (Lux)		Uniformity	
Red	6,8	6,5	21,6	20,5	90%	80%
Green	17,3	16,4	54,2	51,4	90%	80%
Blue	4,7	4,5	14,8	14,1	90%	80%
Orange	6,3	5,9	19,9	18,7	90%	80%
Amber	3,4	3,2	10,8	10,1	90%	80%
White	13,2	12,5	41,5	39,3	90%	80%

Material and Design

Case Material	UV-Treated polycarbonate (main body) ABS (bottom cover)
Available Sizes	L. Square - W 20,32cm x L 20,32cm x H 6,45cm S. Square - W 10,16cm x L 10,16cm x H 6,45cm Rectangular - W 10,16cm x L 20,32cm x H 6,45cm Round 10,16cm x H 6,45cm
Weight	L. Square - 2,5kg S. Square - 0,6kg Rectangular - 1kg Round - 0,5kg
Modulus of rupture	222 kgf/cm ²
Compressive strength	2,74 N/mm ² (=28 kgf/cm ²)
Breaking load	34888 N (=3560 kgf)
Waterproof	IP 68 - 100% (submersable)

Plot lumineux à LED et super capacité: Élégance, fiabilité et écologie

Ces pavés lumineux résolvent à la fois les problématiques d'alimentation et de câblage, mais aussi les problématiques de maintenance, puisque celle-ci est nulle. L'énergie électrique produite par le panneau photovoltaïque incorporé au pavé est stockée dans des super capacités. Il n'y a donc pas de pile ou d'accumulateur à changer régulièrement. Cette absence d'accumulateur en fait un produit propre: pas de métaux lourds à l'intérieur de ce pavé lumineux.

Utilisé autant pour leur esthétique que pour leurs fonctions, ces pavés lumineux à led permettent de créer une ambiance lumineuse et visuelle tout en apportant de réels éléments de sécurité et de signalisation dans tous les lieux publics ou privés.

Les applications sont aussi nombreuses que votre imagination le permet avec pour seule restriction un ensoleillement direct en cours de journée.

Rigel, le plus petit de la gamme s'incorpore très facilement dans le sol, quelque soit le matériau.

3 modes de fonctionnement sont disponibles: éclairage continu, Flash, Flash fade.

Applications

■ Chemin privatif	■ Quai de gare	■ Allée de promenade
■ Devanture de commerçant	■ Parking de grande surface ou d'entreprise	■ Bord de rivière ou de fleuve
■ Cour d'école	■ Marche d'escalier	■ Rue piétonne
■ Façade de bâtiment ou d'entreprise	■ Amphithéâtre	■ Place publique
■ Patio	■ Porche d'entrée	■ Piscine

Existe en 5 couleurs



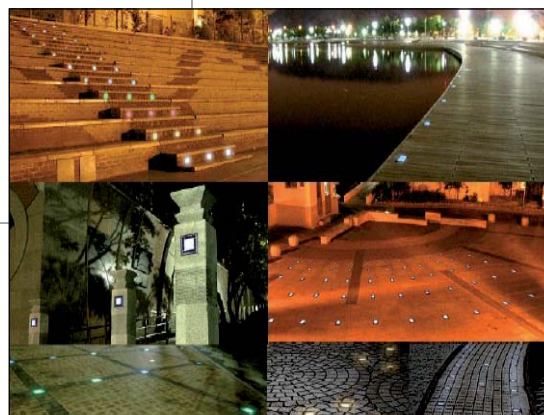
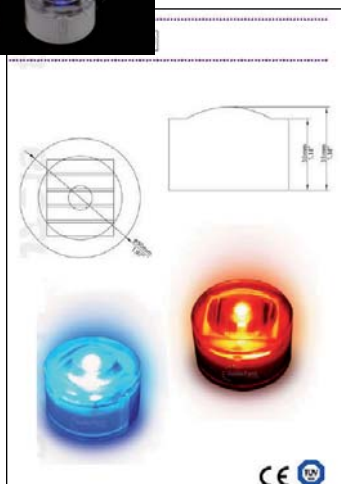
MAXI LED

Une division de

Next EnR

Tel: 04 75 601 113

www.maxi-led.fr



Plot LED

Technology and Operation

Solar panel	Mono-crystalline panel
Illumination technology	Ultra-bright LED
Energy storage	Ultra-capacitor
Charging time	2 Hours (sunny day) to 8 Hours (cloudy day)
Operation at full charge	Up to 14 hours
Operating temperature	140 °F to -13 °F 60 °C to -25 °C
Automatic On/Off level	150 lux - 350 lux
Waterproof	IP 68

Illumination Properties

Available flash patterns	Steady, Flash, Flash-Fade
Available colors	White, Blue, Red, Green, Amber

Material and Design

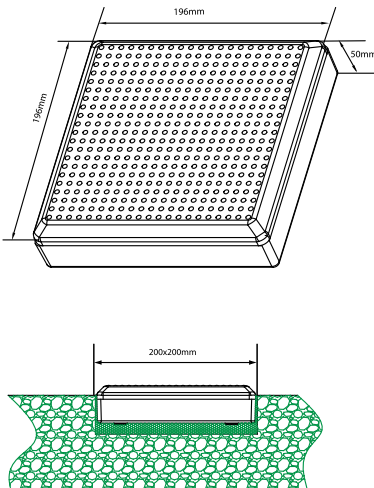
Case material	UV-treated Polycarbonate
Dimensions	Φ1.97" x 1.38"H / Φ50mm x H 35mm
Modulus of rupture	21.8 N/mm ² (=222 kgf/cm ²)
Compressive strength	2.74 N/mm ² (=28 kgf/cm ²)
Breaking load	34.888 N (=3560 kgf)
Weight	0.15lbs / 70g

Solar Brick light



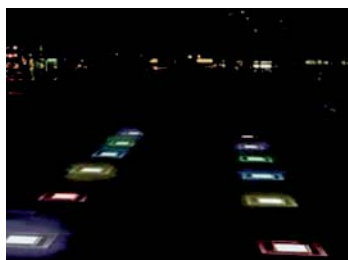
S1-1

Solar Brick
Light
&
Underground
Light



Item No.: ILL-B200A

- Material of light: Super light-permeability and anti-skip Crystalline silicon 4.0V/520mA
- Solar cell: Ni-MH HT AA 1.2V/3600mAh battery; or 2.3V/480F Super capacitor
- Storage component: 4pcs ultra bright white SMD LEDs (or other color available)
- Light source A: 6pcs ultra bright dia5mm LEDs R-G-B colorful changing mode, creat 7 colors
- Light source B: Red, green, blue, white, yellow
- Color of light: One color constant type
- Light mode: -25 to +75°C
- Work Temperature: Over 12 hrs after 1 sunny day charge, 3 nights continuously if battery fully charged
- Work Time: More than 800m
- Visible distance: IP67
- IP rate: 196x196x50mm N.w.: 1.35kg
- Product size: Over 3 years (fitted with Ni-Mh battery)
- Life time: Over 8 years (fitted with super capacitor)



MAXI LED

Une division de

Next EnR

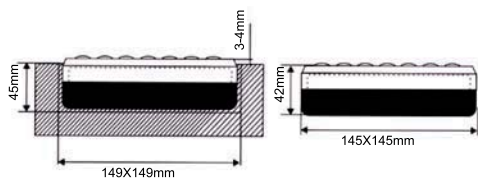
Tel: 04 75 601 113

www.maxi-led.fr

Solar Brick Light

S1-4

Solar Brick
Light
&
Underground
Light

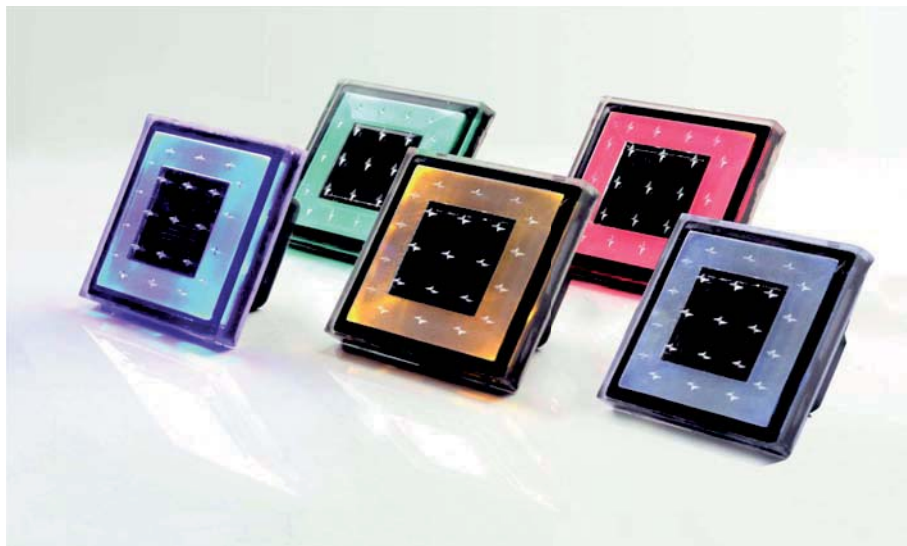


Item No.: ILL-B400

- Material of light: Super light-permeability polycarbonate (PC)
- Solar cell: Crystalline silicon 4.0V/180mA
- Storage component: Ni-MH HT AA 1.2V/2400mAh battery;
or 2.0V/480F Super capacitor
- Light source: 6pcs of super bright LEDs
- Color of light: Red, green, blue, white, yellow
- Light mode: One color constant type
- Work Temperature: -25 to +75°C
- Work Time: Over 12 hrs after 1 sunny day charge,
3 nights continuously if battery fully charged
- Visible distance: More than 800m
- IP rate: IP67
- Product size: 145x145x42mm N.w.: 0.70kg
- Life time: Over 3 years (fitted with Ni-Mh battery)
Over 8 years (fitted with super capacitor)

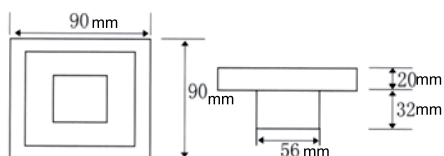


Solar Brick Light

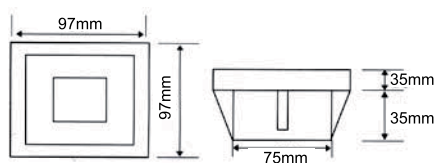


S1-5

Solar Brick
Light
&
Underground
Light



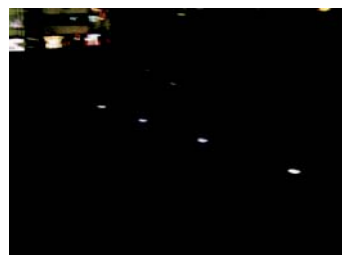
B500



B600

Item No.: ILL-B 00 ILL-B 00

- Material of light: Super light-permeability polycarbonate (PC)
- Solar cell: Crystalline silicon 3.0V/100mA
- Storage component: Ni-MH HT AA 1.2V/1400mAh battery;
or 2.0V/240F Super capacitor
- Light source: 4pcs of super bright LEDs
- Color of light: Red, green, blue, white, yellow
- Light mode: One color constant type
- Work Temperature: -25 to +75°C
- Work Time: Over 12 hrs after 1 sunny day charge,
3 nights continuously if battery fully charged
- Visible distance: More than 800m
- IP rate: IP67
- Product size: MSL-B500: 90x90x52mm N.w.: 0.23kg
MSL-B600: 97x97x55mm N.w.: 0.25KG
- Life time: Over 3 years (fitted with Ni-Mh battery)
Over 8 years (fitted with super capacitor)



MAXI LED

Une division de
Next_{EnR}

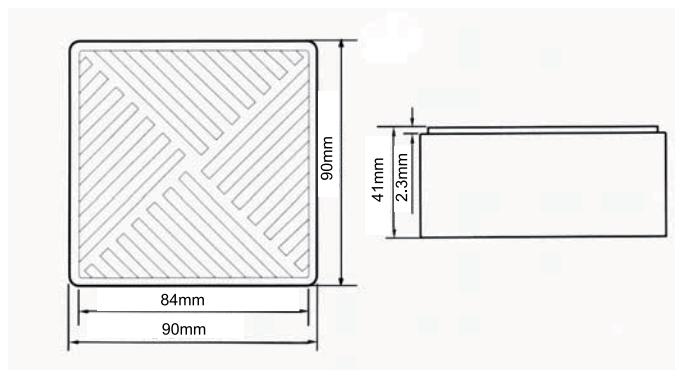
Tel: 04 75 601 113

www.maxi-led.fr

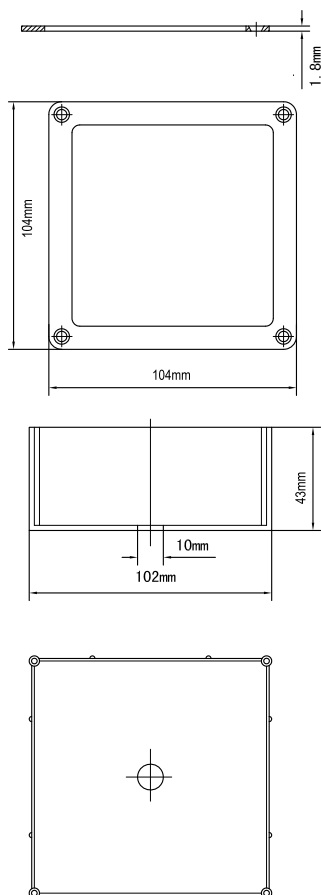
Solar Brick Light

S1-6

Solar Brick
Light
&
Uuderground
Light



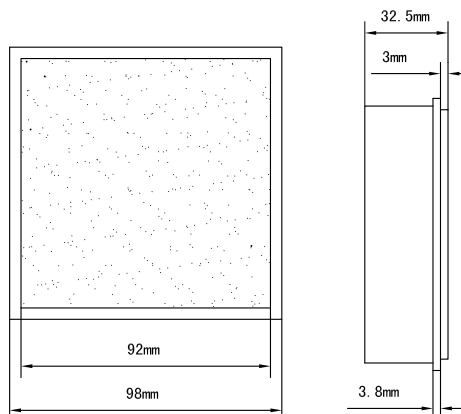
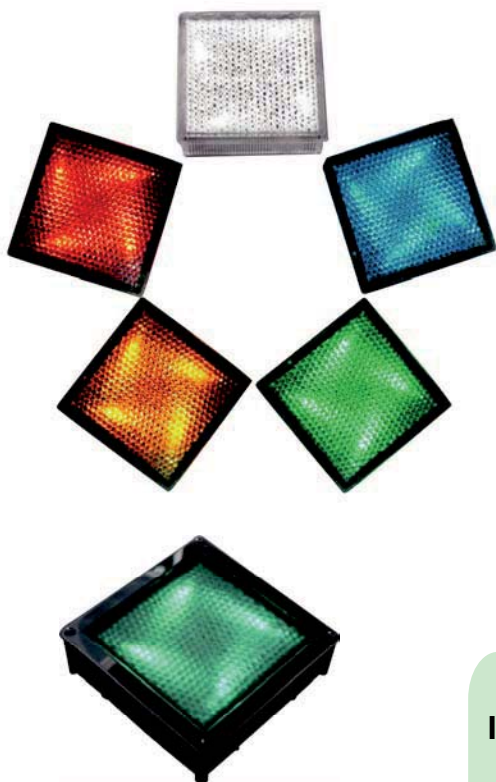
Hardware Fitting(optional)



Item No.: ILL-B 0

- Material of light: Super light-permeability polycarbonate (PC)
- Solar cell: Crystalline silicon 2.5V/80mA
- Storage component: Ni-MH HT AAA 1.2V/2400mAh battery; or 2.3V/360F Super capacitor
- Light source: 4pcs of super bright LEDs
- Color of light: Red, green, blue, white, yellow
- Light mode: One color constant type
- Work Temperature: -25 to +80 °C
- Work Time: Over 12 hrs after 1 sunny day charge, 3 nights continuously if battery fully charged
- Visible distance: More than 800m
- Hardware fittings: Metal mounting case for optional
- IP rate: IP67
- Product size: 90x90x41mm N.w.: 0.28kg
- Life time: Over 3 years (fitted with Ni-Mh battery)
Over 8 years (fitted with super capacitor)

Solar Brick Light



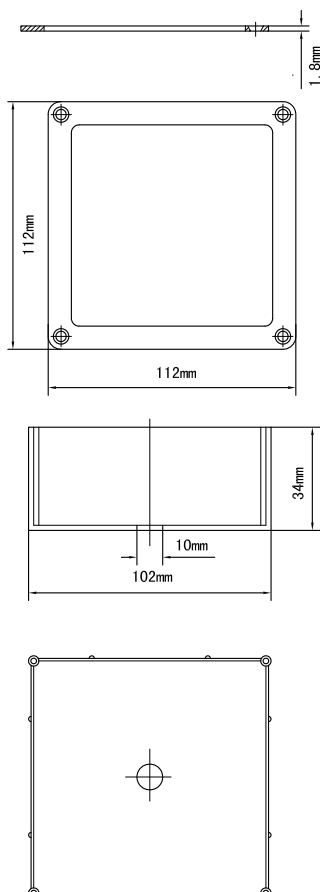
S1-7

**Solar Brick
Light
&
Underground
Light**

Item No.: ILL-B 00

- Material of light: Super light-permeability polycarbonate (PC)
- Solar cell: Crystalline silicon 2.5V/200mA
- Storage component: Ni-MH HT AAA 1.2V/2400mAh battery
- Light source: 4pcs of super bright LEDs
- Color of light: Red, green, blue, white, yellow
- Light mode: One color constant light type
- Work Temperature: -25 to +80 °C
- Work Time: Over 12 hrs after 1 sunny day charge, 3 nights continuously if battery fully charged
- Visible distance: More than 800m
- Hardware fittings: Metal mounting case for optional
- IP rate: IP67
- Product size: 98x98x32.5mm N.w.: 0.3kg
- Life time: Over 3 years (fitted with Ni-Mh battery)

Hardware Fitting(optional)



MAXI LED

Une division de

Next_{ENR}

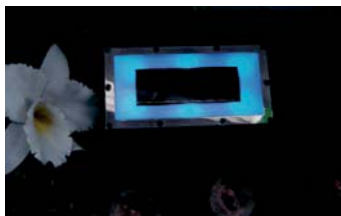
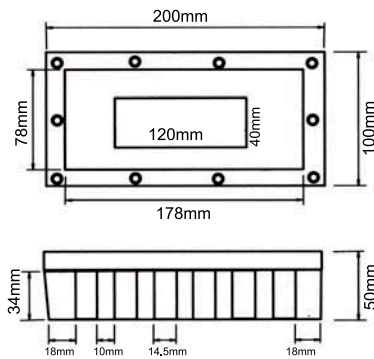
Tel: 04 75 601 113

www.maxi-led.fr

Solar Brick Light

S1-8

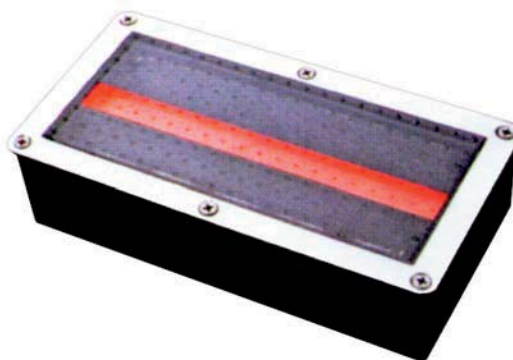
Solar Brick
Light
&
Underground
Light



Item No.: ILL-B 00

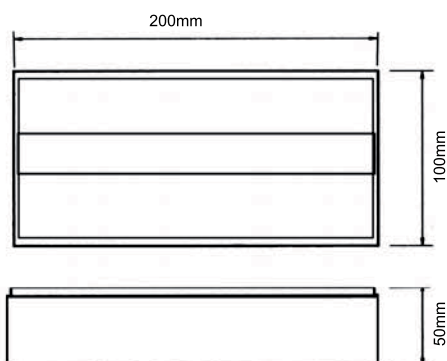
- Material of light: Super light-permeability polycarbonate(PC)
- Solar cell: Crystalline silicon 4V/160mA
- Storage component: Ni-MH HT AA 1.2V/2400mAh battery;
or 2.3V/120F super capacitor
- Light source: 6pcs of super bright LEDs
- Color of light: Red, green, blue, white, yellow
- Light mode: One color constant type
- Work Temperature: -25 to +75°C
- Work Time: Over 12 hrs after 1 sunny day charge,
3 nights continuously if battery fully charged
- Visible distance: More than 800m
- IP rate: IP67
- Product size: 200x100x50mm N.w.: 0.7kg
- Life time: Over 3 years (fitted with Ni-Mh battery)
Over 8 years (fitted with super capacitor)

Solar Brick Light



S1-9

Solar Brick
Light
&
Underground
Light



Item No.: ILL-B 020

- Material of light: Super light-permeability polycarbonate(PC)
- Solar cell: Crystalline silicon 2.0V/450mA (with battery) or 2.0V/380mA (with super capacitor)
- Storage component: Ni-MH HT AA 1.2V/2400mAh battery; or 2.3V/720F super capacitor
- Light source: 15pcs of super bright LEDs
- Color of light: Red, green, blue, white, yellow
- Light mode: Varying or constant type
- Work Temperature: -25 to +80 °C
- Work Time: Over 12 hrs after 1 sunny day charge, 3 nights continuously if battery fully charged
- Visible distance: More than 800m
- Hardware fittings: Metal mounting case for optional
- IP rate: IP67
- Product size: 200x100x50mm N.w.: 1.1kg
- Life time: Over 3 years (fitted with Ni-Mh battery)
Over 8 years (fitted with super capacitor)



MAXI LED

Une division de

Next_{EnR}

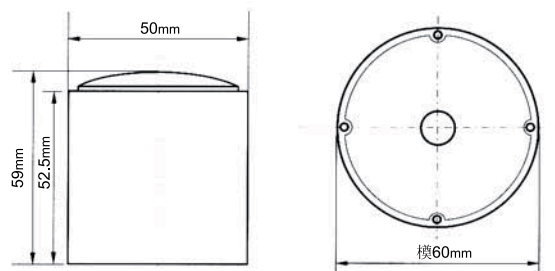
Tel: 04 75 601 113

www.maxi-led.fr

Solar Underground Light

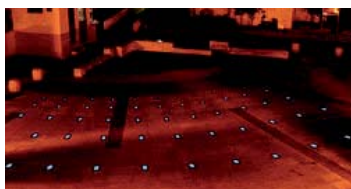
S1-10

**Solar Brick
Light
&
Underground
Light**

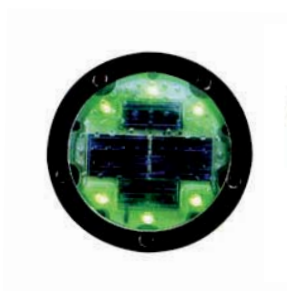


Item No.: ILL- 0

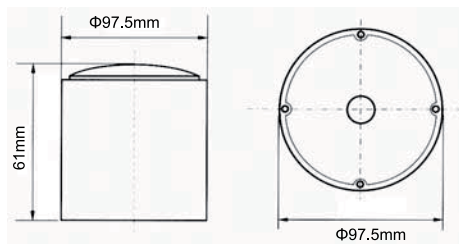
- Material of light: Super light-permeability polycarbonate (PC) with stainless steel ring and aluminium body
- Solar cell: Crystalline silicon 2.5V/80mA
- Storage component: Ni-MH HT AA 1.2V/1200mAh battery or 2.3V/240F super capacitor
- Light source: 4pcs of super bright LEDs
- Color of light: Red, green, blue, white, yellow
- Light mode: One color constant type
- Work Temperature: -25 to +80 °C
- Work Time: Over 12 hrs after 1 sunny day charge, 3 nights continuously if battery fully charged
- Visible distance: More than 800m
- IP rate: IP67
- Product size: Φ 60x59mm N.w.: 0.2kg
- Life time: Over 3 years (fitted with Ni-Mh battery)
Over 8 years(fitted with super capacitor)



Solar Underground Light



G95



S1-11

**Solar Brick
Light
&
Underground
Light**



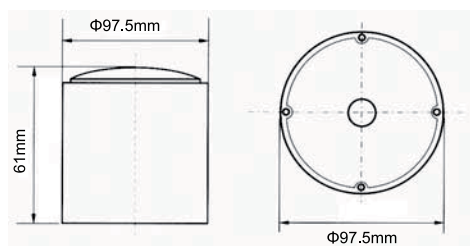
G95R

Item No.: ILL-

- Material of light:
- Solar cell:
- Storage component:
- Light source:
- Color of light:
- Light mode:
- Work Temperature:
- Work Time:
- Visible distance:
- Hardware fittings:
- IP rate:
- Product size:
- Life time:

ILL-

Super light-permeability polycarbonate (PC) with stainless steel ring and aluminium body
Crystalline silicon 2.0V/160mA(with battery), 2.5V/130mA (with capacitor)
Ni-MH HT AAA 1.2V/1200mAh battery or 2.3V/360F super capacitor
6pcs of super bright LEDs
Red, green, blue, white, yellow
Constant type
-25 to +80 °C
Over 12 hrs after 1 sunny day charge, 3 nights continuously if battery fully charged
More than 800m
Metal mounting case for optional
IP67
Φ 97.5x61mm N.w.: 0.80kg
Over 3 years (fitted with Ni-Mh battery)
Over 8 years (fitted with super capacitor)



MAXI LED

Une division de

Next_{EnR}

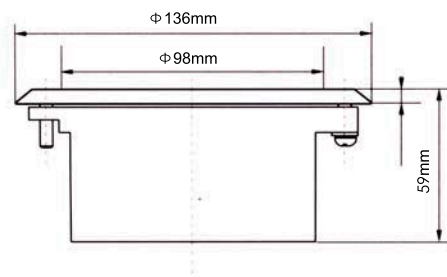
Tel: 04 75 601 113

www.maxi-led.fr

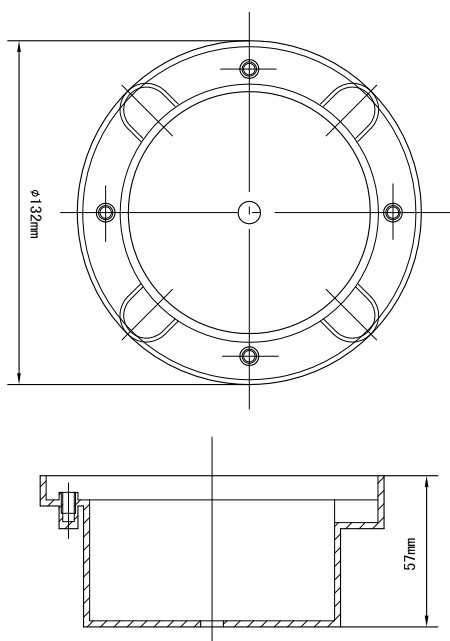
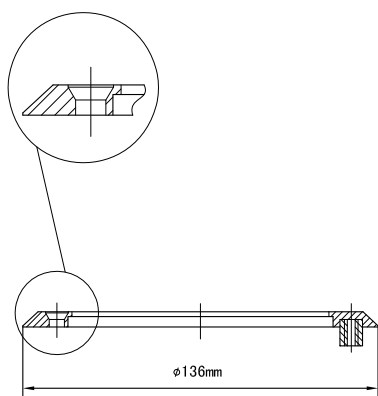
Solar Underground Light

S1-12

Solar Brick
Light
&
Underground
Light



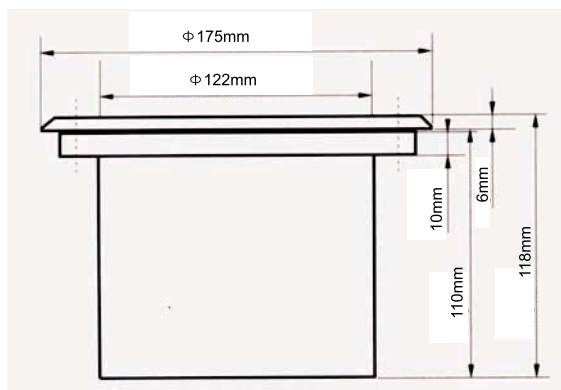
Hardware Fitting(optional)



Item No.: ILL- 0

- Material of light: Metal shell and antiskid reinforce glass
- Solar cell: Crystalline silicon 2.5V/180mA
- Storage component: Ni-MH HT AA 1.2V/1600mAh battery or 2.3V/360F super capacitor
- Light source: 6pcs of super bright LEDs
- Color of light: Red, green, blue, white, yellow
- Light mode: One color constant light type
- Work Temperature: -25 to +80 °C
- Work Time: Over 12 hrs after 1 sunny day charge, 3 nights continuously if battery fully charged
- Visible distance: More than 800m
- Hardware fittings: Metal mounting case for optional
- IP rate: IP67
- Product size: Φ 136x59mm N.w.: 1.0kg
- Life time: Over 3 years (fitted with Ni-Mh battery)
Over 8 years (fitted with super capacitor)

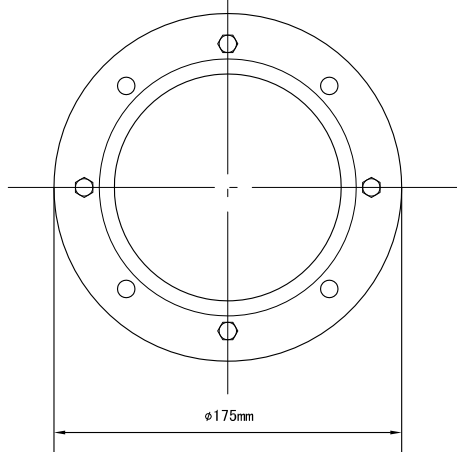
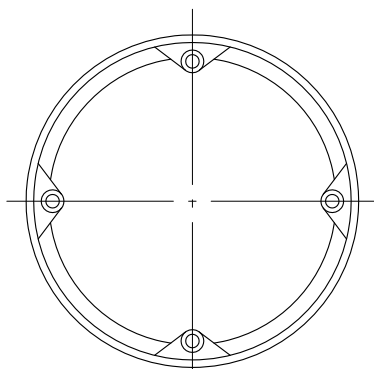
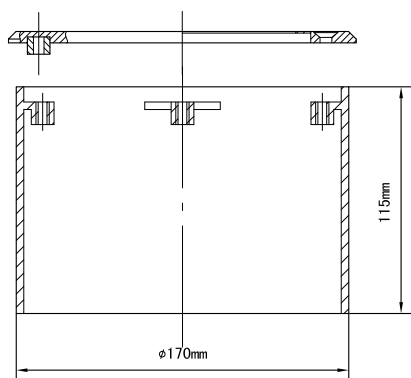
Solar Underground Light



S1-13

**Solar Brick
Light
&
Underground
Light**

Hardware Fitting(optional)



Item No.: ILL- 20

- Material of light: Metal shell and antiskid reinforce glass
- Solar cell: Crystalline silicon 2.0V/180mA(with battery), 2.5V/180mA (with capacitor)
- Storage component: Ni-MH HT AA 1.2V/1600mAh battery or 2.3V/360F super capacitor
- Light source: 6pcs or 18pcs of super bright LEDs
- Color of light: Red, green, blue, white, yellow
- Light mode: One color constant type(6pcs LEDs) or Tri-colored diverform type(18pcs LEDs)
- Work Temperature: -25 to +80 °C
- Work Time: Over 12 hrs after 1 sunny day charge, 3 nights continuously if battery fully charged
- Visible distance: More than 800m
- Hardware fittings: Metal mounting case for optional IP67
- IP rate: IP67
- Product size: Φ 175x118mm N.w.: 1.45kg
- Life time: Over 3 years (fitted with Ni-Mh battery)
Over 8 years (fitted with super capacitor)

MAXI LED

Une division de

Next-ERA

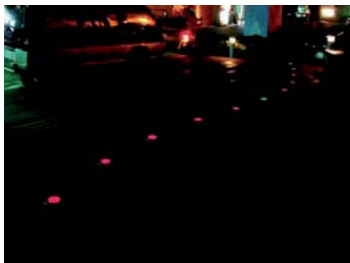
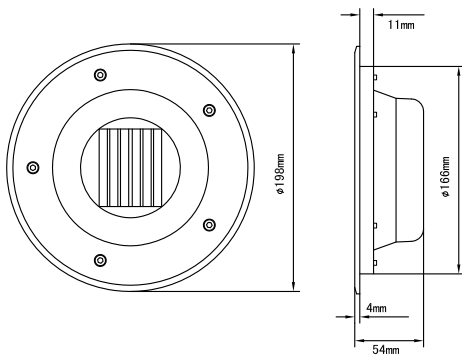
Tel: 04 75 601 113

www.maxi-led.fr

Solar Underground Light

S1-14

Solar Brick
Light
&
Underground
Light



Item No.: ILL- 0

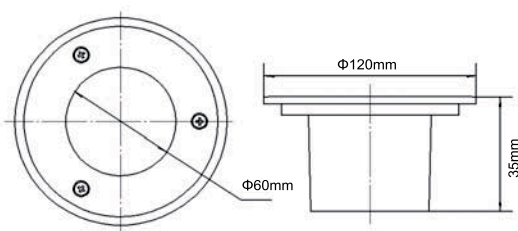
- Material of light: Super light-permeability polycarbonate (PC) with stainless steel ring and aluminium body
- Solar cell: Crystalline silicon 3.0V/100mA
- Storage component: Ni-MH HT AA 1.2V/1500mAh battery or super capacitor 2.3V/480F
- Light source: 8pcs Super bright LEDs
- Color of light: Red, green, blue, white, yellow
- Light mode: Constant type
- Work Temperature: -25 to +75 °C
- Work Time: Over 12 hrs after 1 sunny day charge, 3 nights continuously if battery fully charged
- Visible distance: More than 800m
- IP rate: IP67
- Product size: Φ 198x54mm N.w.: 1.30kg
- Life time: Over 3 years (fitted with Ni-Mh battery)
Over 8 years(fitted with super capacitor)

Solar Underground Light



S1-15

Solar Brick
Light
&
Underground
Light



Item No.: ILL- 2

- Material of light: Super light-permeability polycarbonate (PC) with stainless steel ring and aluminium body
- Solar cell: Crystalline silicon 3V/100mA
- Storage component: Ni-MH HT AA 1.2V/1200mAh battery or super capacitor 2.3V/120F
- Light source: 2pcs of super bright LEDs
- Color of light: Red, green, blue, white, yellow
- Light mode: One color constant type
- Work Temperature: -25 to +75 °C
- Work Time: Over 12 hrs after 1 sunny day charge, 3 nights continuously if battery fully charged
- Visible distance: More than 800m
- IP rate: IP67
- Product size: Φ 120x35mm N.w.: 0.35kg
- Life time: Over 3 years (fitted with Ni-Mh battery)
Over 8 years(fitted with super capacitor)



MAXI LED

Une division de

Next_{EnR}

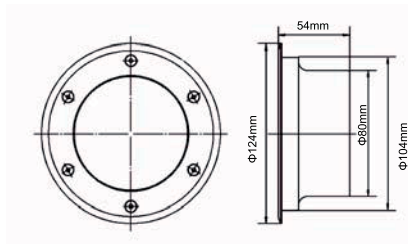
Tel: 04 75 601 113

www.maxi-led.fr

Solar Underground Light

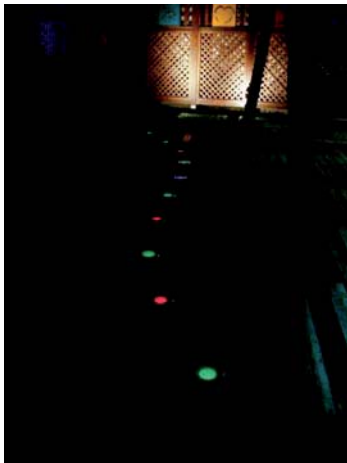
S1-16

Solar Brick
Light
&
Underground
Light



Item No.: ILL-

- Material of light: Super light-permeability polycarbonate (PC) with stainless steel ring and aluminium body
- Solar cell: Crystalline silicon 3.0V/130mA
- Storage component: Ni-MH HT AA 1.2V/1500mAh battery or super capacitor 2.3V/240F
- Light source: 4pcs of super bright LEDs
- Color of light: Red, green, blue, white, yellow
- Light mode: Constant type
- Work Temperature: -25 to +75 °C
- Work Time: Over 12 hrs after 1 sunny day charge, 3 nights continuously if battery fully charged
- Visible distance: More than 800m
- IP rate: IP67
- Product size: Φ 124x54mm N.w.: 0.55kg
- Life time: Over 3 years (fitted with Ni-Mh battery)
Over 8 years(fitted with super capacitor)



Solar Flash Light

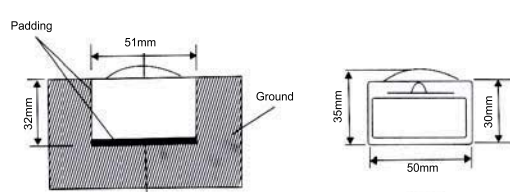


S2-1

**Solar Decorative
Light**

Item No.: ILL- 0

- Material of light: Super light-permeability polycarbonate (PC)
- Solar cell: Crystalline silicon 2.0V/60mA
- Storage component: Ni-MH HT AA 1.2V/350mAh battery or 2V/50F super capacitor
- Light source: 1pc of super bright LED
- Color of light: Red, green, blue, white, yellow
- Light mode: One color flash type or constant type
- Work Temperature: -25 to +70 °C
- Work Time: Over 12 hrs after 1 sunny day charge, 3 nights continuously if battery fully charged
- Visible distance: More than 800m
- IP rate: IP67
- Product size: Φ 50x35mm N.w.: 0.1kg
- Life time: Over 3 years (fitted with Ni-Mh battery)
Over 8 years(fitted with super capacitor)



MAXI LED

Une division de

Next_{ENR}

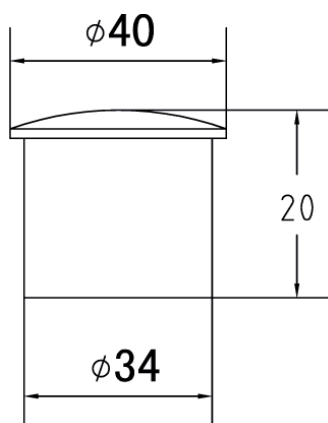
Tel: 04 75 601 113

www.maxi-led.fr

Solar Flash Light

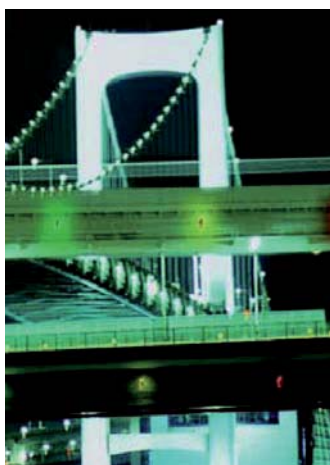
S2-2

Solar Decorative
Light



Item No.: ILL-

- Material of light: Super light-permeability polycarbonate (PC)
- Solar cell: Crystalline silicon 2.0V/40mA
- Storage component: Ni-MH HT AA 1.2V/300mAh battery
- Light source: 1pc of super bright LED
- Color of light: Red, green, blue, white, yellow
- Light mode: One color flash type or constant type
- Work Temperature: -25 to +70 °C
- Work Time: Over 12 hrs after 1 sunny day charge, 3 nights continuously if battery fully charged
- Visible distance: More than 800m
- IP rate: IP67
- Product size: Φ 34x35mm N.w.: 0.06kg
- Life time: Over 3 years (fitted with Ni-Mh battery)
Over 8 years(fitted with super capacitor)



Solar Ice Brick Light

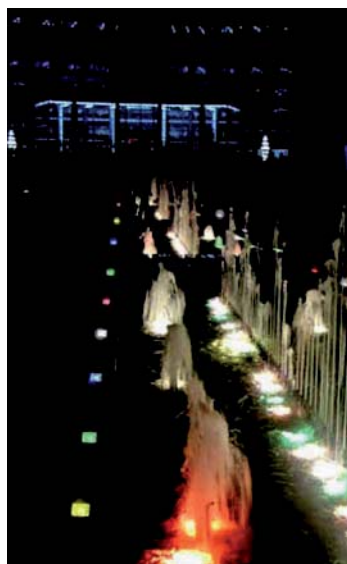
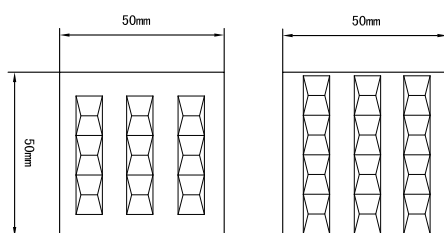


S2-5

Solar Decorative
Light

Item No.: ILL-B 0

- Material of light: Boro-silicon glass light body
- Solar cell: Crystalline silicon 2.0V/60mA
- Storage component: Ni-MH HT AA 1.2V/350mAh battery or super capacitor
- Light source: 1pc of super bright LED
- Color of light: Red, green, blue, white, yellow
- Light mode: Constant type or flashing type
- Work Temperature: -25 to +55°C
- Work Time: Over 12 hrs after 1 sunny day charge, 3 nights continuously if battery fully charged
- Visible distance: More than 800m
- IP rate: IP67
- Product size: 50x50x50mm N.w.: 0.23kg
- Life time: Over 3 years (fitted with Ni-Mh battery)
Over 8 years (fitted with super capacitor)



MAXI LED

Une division de

Next ENR

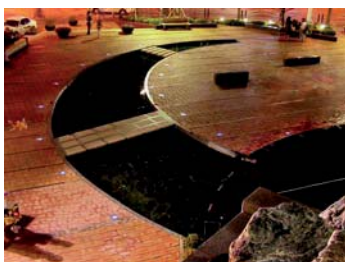
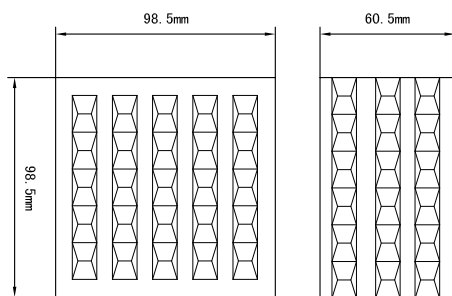
Tel: 04 75 601 113

www.maxi-led.fr

Solar Ice Brick Light

S2-6

Solar Decorative
Light



Item No.: ILL-B

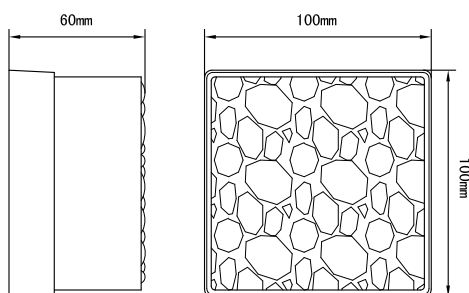
- Material of light: Glass
- Solar cell: Crystalline silicon 2.5V/320mA
- Storage component: Ni-MH HT AA 1.2v/1200mAh battery or super capacitor
- Light source: 4pcs of super bright LEDs
- Color of light: Red, green, blue, white, yellow
- Light mode: Constant type
- Work Temperature: -25 to +55°C
- Work Time: Over 12 hrs after 1 sunny day charge, 3 nights continuously if battery fully charged
- Visible distance: More than 800m
- IP rate: IP67
- Product size: 98x98x60mm N.w.: 0.95kg
- Life time: Over 3 years (fitted with Ni-Mh battery)
Over 8 years (fitted with super capacitor)

Solar Ice Brick Light



S2-7

Solar Decorative
Light



Item No.: ILL-B 0

- Material of light: Glass
- Solar cell: Crystalline silicon 2.5V/320mA
- Storage component: Ni-MH HT AA 1.2V/1200mAh battery or super capacitor
- Light source: 4pcs of super bright LEDs
- Color of light: Red, green, blue, white, yellow
- Light mode: Constant type
- Work Temperature: -25 to +55°C
- Work Time: Over 12 hrs after 1 sunny day charge, 3 nights continuously if battery fully charged
- Visible distance: More than 800m
- IP rate: IP67
- Product size: 100x100x60mm N.w.: 0.80kg
- Life time: Over 3 years (fitted with Ni-Mh battery)
Over 8 years (fitted with super capacitor)



MAXI LED

Une division de
Next ENR

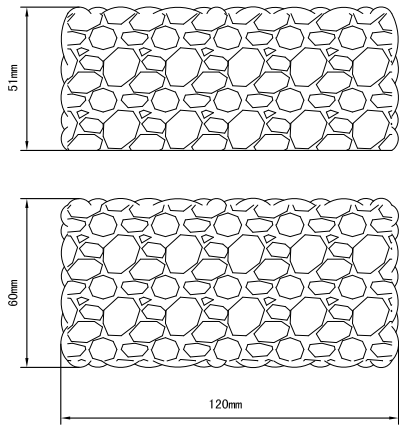
Tel: 04 75 601 113

www.maxi-led.fr

Solar Ice Brick Light

S2-8

Solar Decorative
Light



Item No.: ILL-B 20

- Material of light: Glass
- Solar cell: Crystalline silicon 2.5V/320mA
- Storage component: Ni-MH HT AA 1.2V/1200mAh battery or super capacitor
- Light source: 4pcs of super bright LEDs
- Color of light: Red, green, blue, white, yellow
- Light mode: Constant type
- Work Temperature: -25 to +55°C
- Work Time: Over 12 hrs after 1 sunny day charge, 3 nights continuously if fully charged
- Visible distance: More than 800m
- IP rate: IP67
- Product size: 200x60x51mm N.w.: 1.16kg
- Life time: Over 3 years (fitted with Ni-Mh battery)
Over 8 years (fitted with super capacitor)